



Restore the Call: Massachusetts Status Report for the Common Loon

The loon is a key biosentinel of aquatic integrity for lakes and near shore marine ecosystems across North America. Supported by a grant from the Ricketts Conservation Foundation (RCF), Biodiversity Research Institute (BRI) initiated the largest conservation study for the Common Loon. The goal is to strengthen breeding populations in their existing range and to restore loons to their former breeding range. This work advances our understanding of loon ecology and allows us to apply that knowledge to help restore the integrity of ecosystems where loons once thrived. State working groups and associated conservation plans have been developed in partnership with the Massachusetts Department of Conservation and Recreation, MassWildlife, and the US Fish and Wildlife Service.

Home to more than 1,100 lakes and nearly 1,500 miles of ocean shoreline, Massachusetts offers prime habitat for breeding and wintering loons. Extirpated in the early 20th century, Common Loons returned to the state in 1975 as a nesting species. Over the last four decades, breeding loons have made a comeback—in 2018, there were 43 territorial pairs in the state.



A Series Publication by BRI's Center for Waterbird Studies
January 2019

Status of the Breeding Common Loon Population in Massachusetts

As a result of human activities such as sport hunting and shoreline development, breeding loons in Massachusetts were extirpated in the early 20th century (Forbush 1925). By the time the Federal Migratory Bird Treaty Act of 1918 was enacted, Common Loons (*Gavia immer*) had already disappeared from the state. In 1975, a nesting pair was discovered on Quabbin Reservoir (Clark 1975; Blodgett and Lyons 1988). However, recolonization is slow for Common Loons, and they are currently designated as a Species of Special Concern in Massachusetts.

Distribution and Movements

In New England, nearly 2,000 territorial pairs of Common Loons currently breed in Maine, New Hampshire, and Vermont (Evers et al. 2010). In Massachusetts, a disjunct breeding population exists (Figure 2). However, the loon population is recovering in the state. Since 1985, this population has increased six-fold; by 2018, 43 territorial pairs were found on 18 lakes (Figure 1). While the population has increased, overall productivity—chicks surviving per territorial pair (CS/TP)—has slowed since the late 1990s.

In 14 of the last 21 years, the productivity rates in Massachusetts has been below sustainable levels (0.48 CS/TP; Evers et al 2010; Figure 3). The carrying capacity for Massachusetts is estimated to be about 300 pairs based on lake area, depth, and phosphorus concentrations (Spagnuolo 2012). Therefore, larger breeding populations are feasible.

Data from breeding loons banded in New England and New York, found recovered or re-observed live on wintering areas, ranged from Canada to Florida. Coastal Maine (36%) and Cape Cod, Massachusetts (36%) accounted for 72% of all wintering areas. This was followed by the mid-Atlantic (10%),



Rafts have proven to be an effective management tool in reproductive studies on New England lakes and ponds—hatching success increased by 51% on lakes with stable water levels and 119% on those with fluctuating systems in NH and VT (DeSorbo et al. 2007). Over the past 10 years, only 38% of MA pairs have nested on rafts but have hatched 172% more chicks than natural nesting pairs (Spagnuolo 2012).

southern New England (8%), Long Island, New York (6%), and coastal New Hampshire (4%). Continued banding is needed to better understand seasonal movements (since 1999, 107 loons have been banded).

There are gaps in our knowledge about the wintering activities of loons. We do know that winter densities are highest around Nantucket and Monomoy Islands. More complete information about the seasonal movements of the Massachusetts breeding loon population will help improve sustainable management of the species.

Conservation Concerns

Threats to Massachusetts' loon population include:

- loss of breeding habitat from shoreline development
- human disturbance such as recreational activities
- water level fluctuations from dams
- contaminants such as lead and mercury
- wintering hazards such as marine oil spills

(Source: Evers et al. 2010)

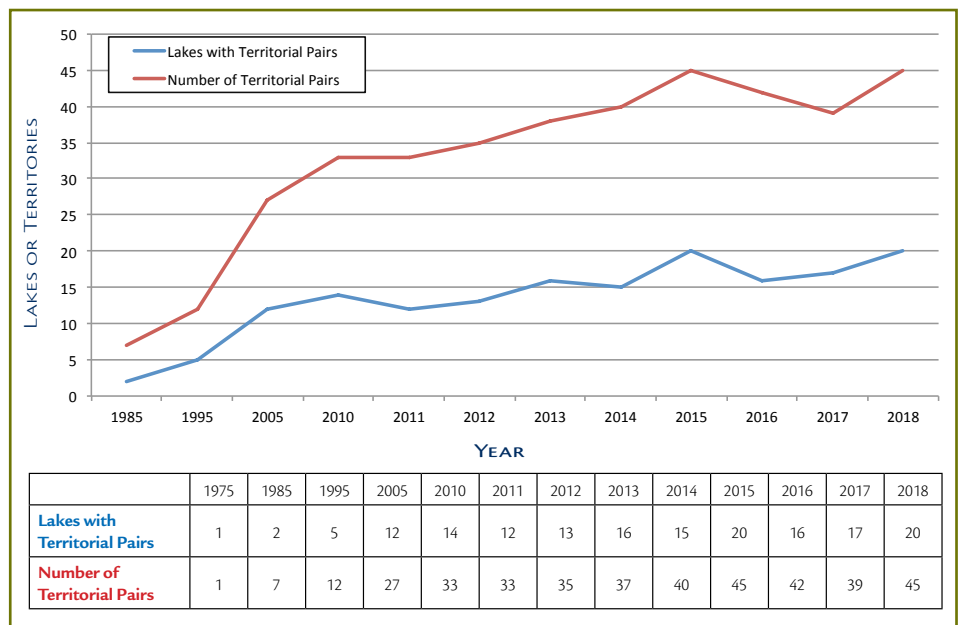


Figure 1. Number of lakes and territories occupied by loons in Massachusetts.

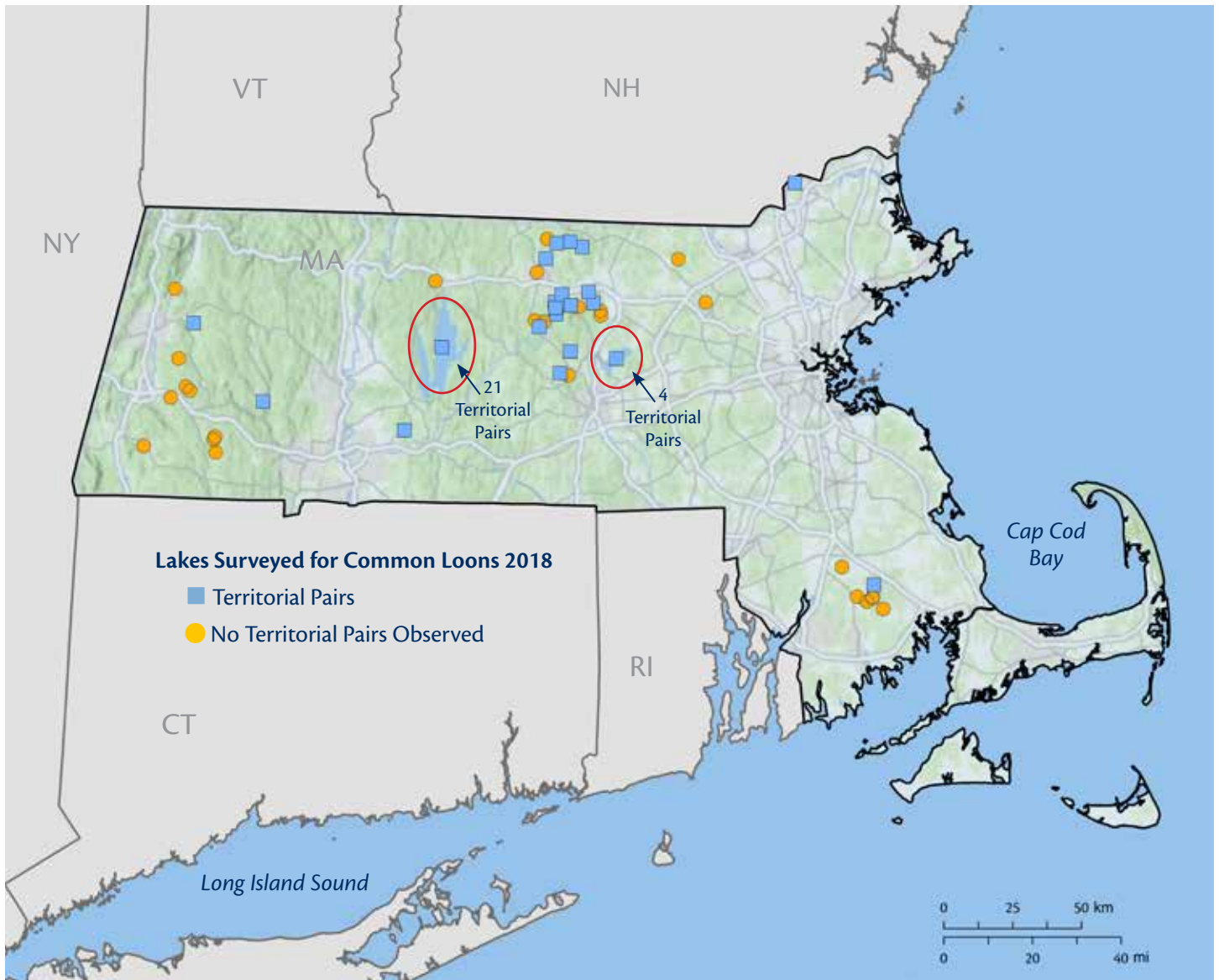


Figure 2. Distribution of Common Loon surveys in Massachusetts for 2018 depicting known territories and lakes without loons.

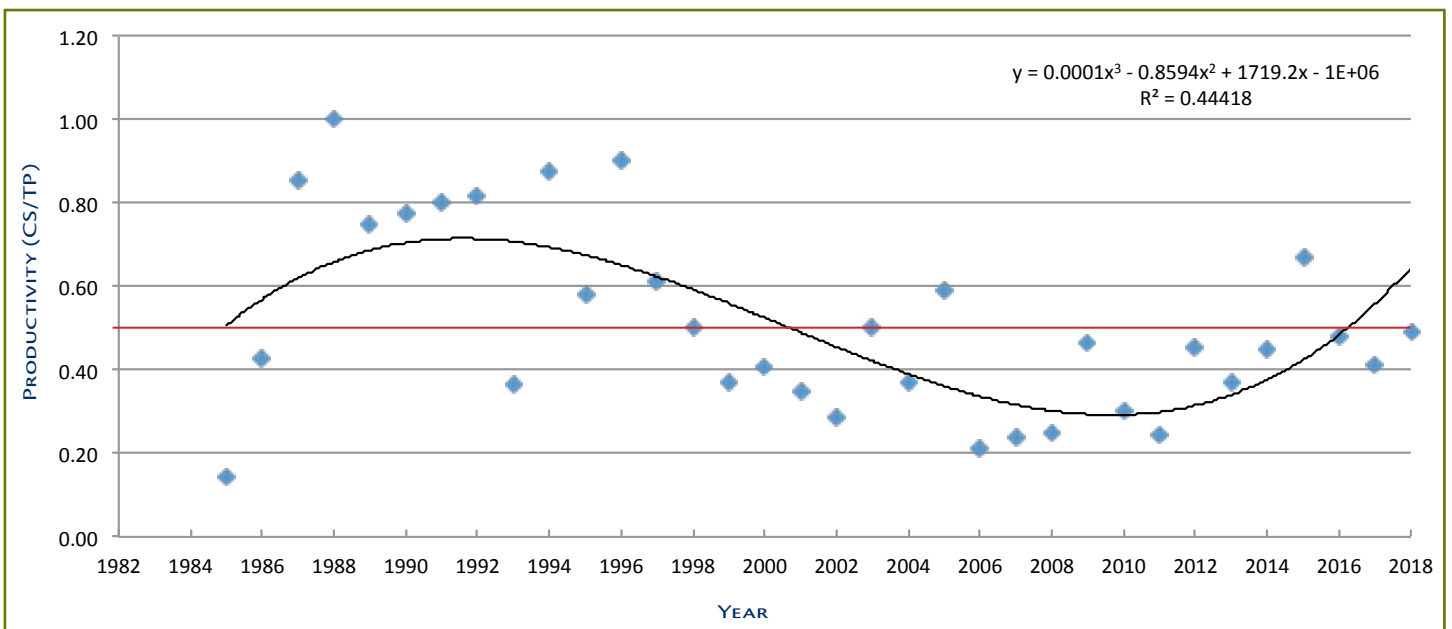


Figure 3. Overall productivity of Common Loons. Red line depicts the number of CS/TP needed to sustain a breeding population.

The Concern for Loons in Massachusetts

Mercury's Impact in the Environment

Humans and wildlife are exposed to mercury pollution mainly through the consumption of contaminated fish and other aquatic organisms. Wildlife directly linked to aquatic ecosystems have an increased exposure risk to mercury compared to species living independent of aquatic food webs because the conversion of mercury to methylmercury is enhanced in wet soils that are low in oxygen.

Mercury, when ingested, can have a wide range of effects on an animal. Survival, reproduction, immune response, song, and endocrine function are all aspects of avian ecology that may be adversely affected by elevated blood mercury levels (Jackson et al. 2011; Evers et al. 2012), especially in loons (Burgess and Meyer 2008; Evers et al. 2003, 2008, 2011).



High mercury levels in loons are most common in four scenarios: (1) where water chemistry is sensitive to mercury input; (2) when summertime lake level fluctuations are greater than six feet; (3) where large mercury point sources exist; and (4) where shoreline wetlands are common.

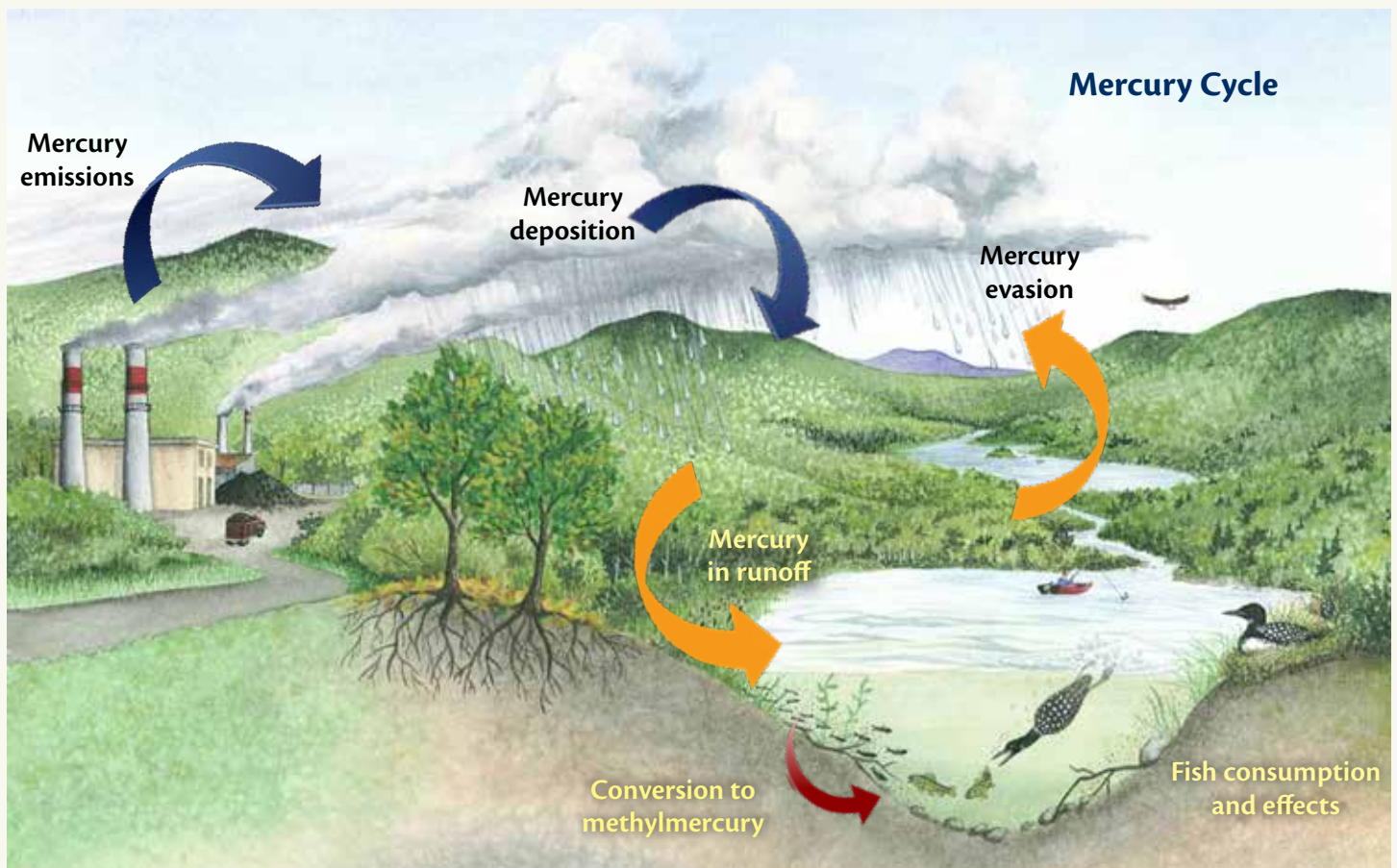


Figure 4. This simple version of the mercury cycle illustrates how mercury enters and moves through an ecosystem. Sources of mercury in Massachusetts are varied. Coal-fired power plants (particularly those in the Ohio River Valley) are a major source of air emissions. Recent reductions in air emissions from incinerators have proven effective in rapidly reducing mercury in loons and fish (Evers et al. 2007). Water-borne sources are still not fully known.

Common Loons Help Us Monitor Mercury in the Environment

Recent levels of available methylmercury in aquatic ecosystems in the Northeast pose significant risks to human and ecological health (Smith and Tripp 2005; Scheuhammer et al. 2011; Sunderland et al. 2013).

Loons—large, long-lived birds that feed exclusively on fish—generally bioaccumulate more mercury than other bird species. Loons are therefore widely recognized as the key avian indicator for lakes in North America (Evers 2006).

Continental trends in mercury pollution indicate a significant increasing gradient—west to east with the highest blood and egg mercury levels in the Northeast (Evers et al. 1998, 2003, 2007). As such, this region contains *biological mercury hotspots*. North-central Massachusetts is one area of concern (Evers et al. 2007). Blood samples from 119 adults taken between 1999 and 2018 ranged from 0.67 to 6.58 parts per million (ppm) with a mean of 2.35 ± 1.18 (ppm, wet weight [ww]; Savoy and Dalton 2019).

Extensive research across North America has determined male loons contain higher mercury concentrations than females from the same lake. This difference in mercury concentrations is due to male loons being larger than females, requiring more food intake as well as the female's ability to shed excess mercury burdens from her body during the egg laying process each season. A formula has been developed

to standardize adult loon blood mercury concentrations to a single comparable unit, the female loon unit (FLU; Evers et al. 2011).

Using the FLU, on average, 9% of Massachusetts' breeding Common Loon population contains a blood mercury concentration (≥ 3.0 to 3.5 ppm) associated with a 40–50% reduction in surviving young. Additionally, 65% of Massachusetts' loons contain a blood mercury concentration above 1.5 ppm, a level with potential to cause a 10% decrease in fledged young. These findings may explain lowered productivity observed in Massachusetts over the past 15 years (Figure 6).

Lowered reproductive success is partly due to behavioral changes, such as increased time spent away from the nest, which then increases egg exposure to excessive cold or heat, as well as to predators.

Mercury and Air Toxic Standards

In April 2015, the US EPA Mercury and Air Toxics Standards rule went into effect. The rule limits emissions of toxic air pollutants, including mercury and other heavy metals. The aim is to reduce mercury emissions in the United States by 91%.

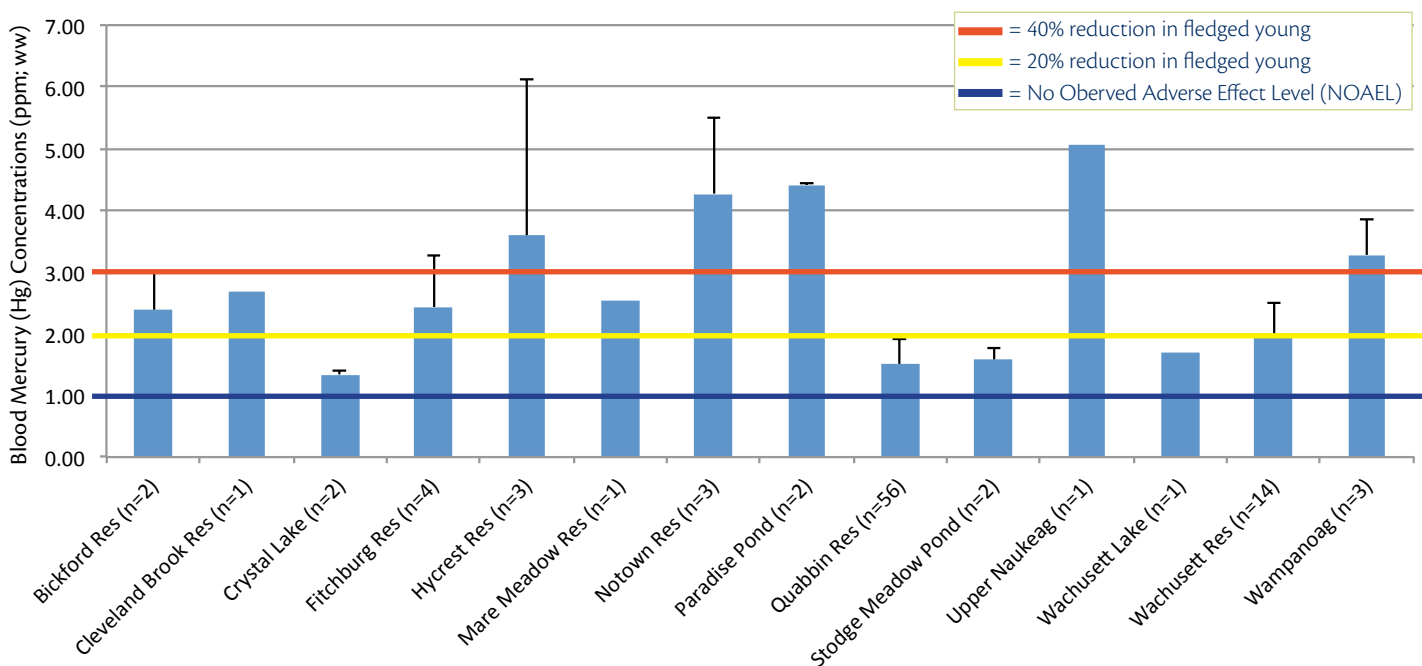


Figure 6. Mean blood mercury concentrations (FLU's) in adult Common Loons sampled on Massachusetts waterbodies (1999-2018; n=95). The three colored lines represent mercury effect thresholds in Common Loons: red = 40% reduction in fledged young; yellow = a 20% reduction in fledged young; and dark blue = No Observed Adverse Effect Level, or NOAEL (Evers 2018).

Marine Oil Spills: Applying Successful Approaches

Bouchard Barge 120

On April 27, 2003, the Bouchard Barge 120 (B120) struck ground near Cape Cod Canal. Between 22,000 and 98,000 gallons of No. 6 fuel oil spilled into Buzzards Bay (U.S. Coast Guard 2003; Hall 2003).

This event occurred during migration of several bird species including the Common Loon. Approximately 200 dead or moribund loons were collected and a rapid field assessment was coordinated by the U.S. Fish and Wildlife Service (USFWS) through the Loon Preservation Committee (LPC) and BRI to document the range and fate of dispersing individuals (Taylor et al. 2004).

Oil Fingerprinting

Dispersed loons with oiled plumage were identified in Maine, Massachusetts, and New Hampshire. A total of five loons were observed with oil in Maine and New Hampshire. One of these loons was identified by its color bands and found on its traditional breeding territory in central New Hampshire.

Another loon captured in New Hampshire was tested and found to have been contaminated by the B120 oil spill. This finding and other observations documented that the “footprint” of impact was greater than the immediate Buzzards Bay area. Pre- and post-spill data from monitored breeding loon populations in the Northeast helped identify further potential impacts to reproductive success.

Proven Restoration Strategies

In a precedent-setting 10-year restoration effort for the North Cape Oil Spill in Rhode Island, BRI worked with the USFWS to identify and purchase the best lake shoreline properties for mitigation. We then monitored the protected loon pairs on a weekly basis for two to six years. This long-term approach was helpful in replacing and determining the loon years lost (adult loons that died from the spill as well as their lost future progeny). This strategy is worth considering for the B120 spill.



Above: Bouchard Barge 120 aground near Cape Cod Canal, April 2003. Oil washed ashore for more than two weeks, impacting a variety of natural resources, including wildlife, across more than 90 miles of shoreline.



Left: An oiled Common Loon on Horseneck Beach, MA.

Northeast Loon Study Working Group

Organized in 1994, the Northeast Loon Study Working Group (NELSWG), led by the LPC and USFWS, is a consortium of federal and state agencies, universities, and nonprofit organizations from New England states and eastern Canadian provinces created because of wide-spread concerns about the health of loons in the Northeast.

With input from members, NELSWG coordinates cooperative research and other actions on issues, such as the development of standardized methodologies, that are beyond the scope of any one of its member organizations.

NELSWG is working with the B120 trustee council to help identify potential restoration solutions to counter the loss of loons from that oil spill.

Critical Gaps in Understanding

Monitoring and banding efforts have allowed a detailed examination and understanding of the breeding loon population in Massachusetts—its demographics and natural history, as well as comparisons and benchmarking with neighboring state populations. Additional data is required to more fully determine the biological parameters used in NRDA's calculations for loon-years gained through conservation actions resulting from the B120 oil spill. These knowledge gaps and recommendations to address them are presented in the following sections.

Adult and Juvenile Survivorship and Breeding Site Fidelity

Monitoring banded breeding loons in Massachusetts should continue during the breeding season. The annual count of returning loons and their associated reproductive outcomes will allow us to refine the demographic parameters required to model loon-years lost due to oil spills.

Translocated Loon Chick Return Rates and Dispersal

Documenting the successful fledging, returning, and breeding of translocated loon chicks is important for guiding restoration plans that utilize translocation as part of an effort to restore loon-years lost.

Translocated chicks have fledged from both captive rearing and direct release approaches. We documented their successful return as adults in summer 2018. Monitoring southeastern

Massachusetts to resight returning loons translocated to that area will be important to document habitat use, movements, and any territorial behavior.

Wintering Range and Winter Site Fidelity

Few wintering band resights and recoveries have occurred for Massachusetts loons due to the small number of banded loons and difficulty of obtaining these data points. In order to increase the understanding of this aspect of the population's natural history, satellite telemetry tracking devices (PTT—Platform Transmitter Terminal) should be deployed on male Massachusetts loons. Data obtained from this effort would provide insight into migration timing and pathways, wintering locations, and winter home range. Alternatively, the geolocator approach to investigating wintering loons requires recovery of the devices in subsequent breeding seasons, and the resulting location data lacks precision (100+ km spread in data points).

Massachusetts Habitat Assessment and Carrying Capacity

Prior to extirpation, loons occupied a large part of Massachusetts but have only recolonized a small portion of their former range in the state. Carrying capacity estimates by Spagnuolo (2014) reported quality breeding habitat across the state as well as the potential for 295 territorial pairs. This effort could be revised and refined to better understand the potential population gains from loon restoration efforts in targeted areas (i.e., southeastern Massachusetts and the Berkshires).

Translocating Loon Chicks to Massachusetts

In 2015, in collaboration with the New York State Department of Environmental Conservation and the Massachusetts Division of Fisheries & Wildlife, BRI successfully moved seven chicks from New York's Adirondack Park to a lake in the Assawompsett Pond Complex (APC) in southeastern Massachusetts. In 2016, BRI translocated nine chicks to the APC (four from New York, five from Maine) with assistance from the Maine Department of Inland Fisheries & Wildlife and Maine Audubon Society. In 2017, eight chicks were translocated from Maine to Massachusetts. Overall, 24 chicks were successfully translocated to Massachusetts.

Five adult loons returned to the lakes in Massachusetts to which they were translocated and captive-reared, and then from which they fledged. Their return marks a major milestone in the efforts to translocate Common Loons. See BRI publication: *Loon Translocation: A Summary of Methods and Strategies for the Translocation of Common Loons* at www.briloon.org/loons2018.



BRI staff developed methods for captive rearing loon chicks in aquatic pens (far left). When they are able to forage on their own, the loons are released and carefully monitored until they fledge.

Literature Cited

- Blodgett, B.G. and P.J. Lyons. 1988. The recolonization of Massachusetts by the Common Loon (*Gavia immer*). Pp.177-184 in P.L.V. Strong, d. Papers from the 1987 conference on loon research and management. North Am. Loon Fund, Meredith, NH. 213pp.
- Burgess, N.M. and M.W. Meyer. 2008. Methylmercury exposure associated with reduced productivity in common loons. *Ecotoxicology* 17:83–91.
- Clark, R.A. 1975. Common Loons nest again in Massachusetts—Bird News of Western Mass.
- DeSorbo, C.R., K.M. Taylor, D.E. Kramar, J. Fair, J.H. Cooley, D.C. Evers, W. Hanson, H.S. Vogel and J.L. Atwood. 2007. Quantifying and characterizing the reproductive advantages gained by raft-nesting Common Loons (*Gavia immer*) on artificial impoundments and natural lakes in Maine and New Hampshire. *J. Wildl. Manage.* 71:1206-1213.
- Evers, D.C. 2018. The Effects of Methylmercury on Wildlife: A Comprehensive Review and Approach for Interpretation, Editor(s): D.A. Dellasala and M. I. Goldstein, In *Encyclopedia of the Anthropocene*. Elsevier 181-194. ISBN 9780128135761, <https://doi.org/10.1016/B978-0-12-809665-9.09985-7>. (<http://www.sciencedirect.com/science/article/pii/B9780128096659099857>)
- Evers, D.C., A.K. Jackson, T.H. Tear, and C.E. Osborne. 2012. Hidden Risk: Mercury in Terrestrial Ecosystems of the Northeast. Biodiversity Research Institute. Gorham, Maine. BRI Report 2012-07. 33 pages.
- Evers D.C., J.G. Wiener, N. Basu, R.A. Bodaly, H.A. Morrison, and K.A. Williams. 2011. Mercury in the Great Lakes region—Bioaccumulation, spatial and temporal patterns, ecological risks, and policy. *Ecotoxicology* 20:1487-1499. Evers, D.C., J.D. Paruk, J.W. McIntyre and J.F. Barr. 2010. Common Loons (*Gavia Immer*). The Birds of North America Online (A. Poole, Ed). Ithaca: Cornell Lab of Ornithology; Retrieved from the Birds of North America Online: <http://bna.birds.cornell.edu/bna/species/313doi:10.2173/bna.313>.
- Evers, D.C., K.A. Williams, M.W. Meyer, A.M. Scheuhammer, N. Schoch, A.T. Gilbert, L. Siegel, R.J. Taylor, R. Poppenga, C.R. Perkins. 2011. Spatial gradients of methylmercury for breeding common loons in the Laurentian Great Lakes region. *Ecotoxicology*. 20:1609-1625.
- Evers, D.C., L.J. Savoy, and C.R. DeSorbo. 2008. Adverse effects from environmental mercury loads on breeding common loons. *Ecotoxicology* 17:69–81.
- Evers, D.C. 2007. Status assessment and conservation plan for the Common Loon in North America. U.S. Fish and Wildlife Service Tech. Rept. Hadley, Massachusetts.
- Evers, D.C., Y.J. Han, C.T. Driscoll, N.C. Kamman, M.W. Goodale, K.F. Lambert, T.M. Holsen, C.Y. Chen, T.A. Clair, and T. Butler. 2007. Identification and Evaluation of Biological Hotspots of Mercury in the Northeastern U.S. and Eastern Canada. *Bioscience* 57:29-43.
- Evers, D.C. 2006. Loons as biosentinels of aquatic integrity. *Environ. Bioindicators*. 1:18-21.
- Evers, D.C., K.M. Taylor, A. Major, R.J. Taylor, R.H. Poppenga, and A.M. Scheuhammer. 2003. Common Loon eggs as indicators of methylmercury availability in North America. *Ecotoxicology* 12:69-81.
- Evers, D.C. 2001. Common Loon population studies: Continental mercury patterns and breeding territory philopatry. Ph.D. Dissertation, Univ. Minn., St. Paul.
- Evers, D.C., J. D. Kaplan, M.W. Meyer, P.S. Reaman, A. Major, N. Burgess, and W.E. Braselton. 1998. Bioavailability of environmental mercury measured in Common Loon feathers and blood across North American. *Environ. Tox. Chem.* 17:173-183.
- Forbush, E.H. 1925. Birds of Massachusetts and Other New England States. Massachusetts Department of Agriculture. Vol 1. 481 pp.
- Hall, D.A. 2003. Report of Investigation of Quantity of Oil Spilled from the Barge B120 at Buzzards Bay April 2003. Independent Maritime Consulting Ltd., Wallingford, Pennsylvania. Prepared for the Bouchard Transportation Company, Inc., Melville, New York. June 14, 2003.
- Jackson A., Evers D.C., Etterson M., Condon A., Folsom S. 2011. Mercury exposure affects the reproductive success of a free-living terrestrial songbird, the Carolina Wren (*Thryothorus ludovicianus*). *Auk* 128: 759–769.
- MDCR (Massachusetts Department of Conservation and Recreation). 2012. 2012 Quabbin-Wachusett Watersheds Common Loon summary. Massachusetts Department of Conservation and Recreation, Division of Water Supply Protection, West Bolyston, MA. 8 pp.
- Savoy, L. and A. Dalton. 2019. Contaminants in Massachusetts' Breeding Common Loon Population: Summary Report 2018. Report # 2018-36. Biodiversity Research Institute, Portland, Maine.
- Smith, C.M. and L.J. Trip. 2005. Mercury Policy and Science in Northeastern North America: The Mercury Action Plan of the New England Governors and Eastern Canadian Premiers. *Ecotoxicology* 14:19-35.
- Spagnuolo, V. 2012. A landscape assessment of habitat and population recovery of Common Loons (*Gavia immer*) in Massachusetts, USA (Unpublished master's thesis), Harvard University.
- Sunderland, E.M., A. Amirbahman, N.M. Burgess, J. Dalzei, G. Harding, S.H. Jones, E. Kamai, M.R. Karagas, X. Shi, and C.Y. Chen. Mercury sources and fate in the Gulf of Maine. *Environmental Research* 119:27–41.
- Taylor, K., Evers, D.C., and T. Daigle. 2004. Common Loon injury rapid assessment from the Bouchard Barge No. 120 (Buzzards Bay) oil spill. Report BRI 2004-03. Biodiversity Research Institute, Falmouth, ME. Submitted to U.S. Fish Wildl. Serv, Concord, NH.
- U.S. Coast Guard. 2003. Bouchard notifies Coast Guard about amount of oil spilled in Buzzards Bay. Press Release #035-03. May 20, 2003.

Suggested Citation for this Report

Evers, D. C., L. Savoy, M. Kneeland, K. Taylor, V. Spagnuolo, and A. Dalton. 2018. Restore the Call: Massachusetts Status Report for the Common Loon. Biodiversity Research Institute, Portland, Maine. Science Communications Series BRI 2018-35. 8 pages.

Project Funding

Funding for this project has been generously provided by the Ricketts Conservation Foundation, the Massachusetts Department of Conservation and Recreation, and the Massachusetts Division of Fisheries and Wildlife (MassWildlife).

Acknowledgments

BRI wishes to acknowledge: Dan Clark, Kiana Koenen, Ken MacKenzie, and Jillian Whitney of the Massachusetts Department of Conservation and Recreation; Erik Amati, Bill Davis, Tom French, Andrew Madden, Bridgett McAlice, Carolyn Mostello, and Andrew Vitz of MassWildlife for their field data and insights about Massachusetts' loon population; Brian Brock and Glenn McAvoy, our volunteer survey team on the translocation site; and the town water managers of Concord, Fitchburg, Leominster, Pittsfield, New Bedford, Taunton and Worcester for permitting access to survey reservoirs and breeding loons.



BRI's mission is to assess emerging threats to wildlife and ecosystems through collaborative research and to use scientific findings to advance environmental awareness and inform decision makers.

Credits

Editing and Production: Deborah McKew **Maps:** Mark Burton
Photography: Cover: Landscape: A. Woodworth Flickr; Common Loon: D. Poleschook. Page 2: Loon raft: J. Fiely. Page 3: Fisherman: D. Poleschook Page 4: Adult loon: D. Poleschook; Figure 3 courtesy of The Hubbard Brook Research Foundation. Page 5: Mercury Deposition Network site: Black Rock Forest Consortium. Page 6: Bouchard Barge 120 and oiled loon courtesy NOAA. Page 7: Aquatic rearing pens © MassWildlife/Bill Byrne, Loon in rearing pen © BRI-Michelle Kneeland.